



Exam : E20-532

**Title : Networked Storage - SAN Specialist
Exam for Storage Administrators**

Ver : 03.30.07

QUESTION 1

On the ControlCenter infrastructure server, Certkiller .com has added two McData DS-32M switches at a remote location, without a service processor and DSM-Connect. Certkiller .com has been unable to discover the DS-32M switches using SAN Manager. What action is needed?

- A. Install DSM-Connect on the Service Processor
- B. Upgrade firmware on the DS-32 switches.
- C. Install DSM-Connect Software on a separate host.
- D. Enable the Embedded Web Server.

Answer: C

QUESTION 2

Name the option which is used to prevent mirroring at the host level, if the device is already mirrored at the storage level in a PowerPath Volume Manager 4x ENVIRONMENT.

- A. NO_MIRRORS_ON_REDUNDANT_HW_POLICY
- B. SW_MIRRORS_ON_REDUNDANT_HW_POLICY
- C. HW_MIRRORS_ON_REDUNDANT_SW_POLICY
- D. DISABLE_MIRRORS_ON_REDUNDANT_HW_POLICY

Answer: B

QUESTION 3

Name the two [2] items of information which will be displayed when viewing the Node List from Connectrix Manager.

- A. Fiber Channel address
- B. Port Number
- C. Port Speed
- D. Zone

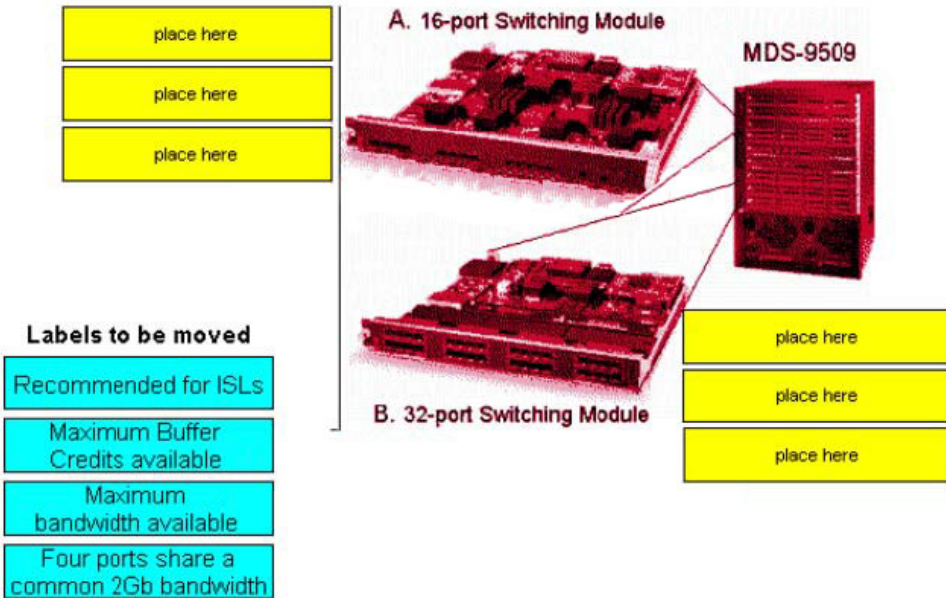
Answer: A,B

QUESTION 4

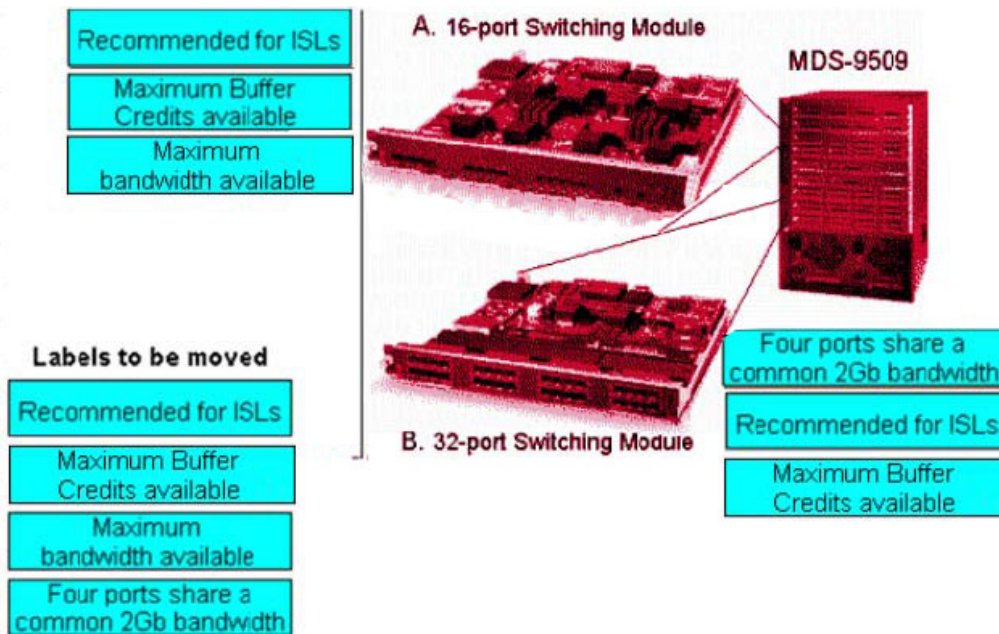
DRAG DROP

Name the factors which need to be considered when incorporating 16 and 32 port Switching Modules (line cards) into an MDS-9000.

E20-532



Answer:



QUESTION 5

In Certkiller .com environment, HBA has been replaced on a host. You notice that the host still sees all storage devices on all paths, after rebooting the host. Explain why.

- A. There is no LUN masking deployed on the storage array
- B. Zoning has been disabled on the switch or hardware/port zoning is in effect
- C. The WWPN of the host has not changed and hence there is no need for any changes to the SAN
- D. The old HBA has the same WWPN as the new one

Answer: A,B

QUESTION 6

Name the view of Workload Analyzer which will provide the aggregate utilization of all FA ports in the Symmertix.

- A. Link utilization view
- B. Performance view
- C. Performance traffic view
- D. Data collection view

Answer: B

QUESTION 7

In a DS-24M2 switch, how many buffer-to-buffer BB credits can be used on ports 4-23?

- A. 12
- B. 5
- C. 24
- D. 60

Answer: B

QUESTION 8

Name the two [2] statements which describe port binding.

- A. Allows one to specify which WWN will be allowed access on a specified port
- B. Supported on MDS-series switches
- C. Allows one to specify which WWN will be allowed access to a specified target
- D. Allows one to specify which port will be allowed access to a specified target
- E. Supported on M-series switches

Answer: C,E

QUESTION 9

Name the Cisco tool which is used to monitor, configure and manage multiple MDS switches.

- A. SAN Manager
- B. Device Tools
- C. Connectrix Manager
- D. Fabric Manager

Answer: D

QUESTION 10

Name the command which can be used to check the performance of all power path devices at 5-minute intervals.

- A. powercf display dev=all every=300
- B. powercf display dev=all every=5
- C. powermt display dev=all every=300
- D. powermt display dev=all every=5

Answer: C

QUESTION 11

To implement an extended distance IP solution in a MDS-9509 Director, how many ISLs are required?

- A. 4
- B. 2
- C. 6
- D. 0

Answer: D

QUESTION 12

Explain what EMC VisualSAN 4.0 uses to gather Brocade Switch information.

- A. SCSI INQ
- B. Navisphere CLI
- C. Webtools
- D. SNMP

Answer: D

QUESTION 13

DRAG DROP

Name the sequence of steps which must be performed to complete an online firmware upgrade of a target switch. In an environment with dual fabrics, power path, and hosts, name which are NOT configured to EMC standards. (one or more labels might not be used)

Steps in order

<i>Place first step here</i>
<i>Place second step here</i>
<i>Place third step here</i>
<i>Place fourth step here</i>
<i>Place fifth step here</i>
<i>Place sixth step here</i>

Steps, select from these

Perform the firmware upgrade
Test the HBA and port functionality
Restart the EMC Control Center FCC agent
Deactivate the paths through the target switch
Reactivate the paths through the target switch
Shutdown the EMC Control Center FCC agent
Document host HBA port and cable configurations

Answer:

QUESTION 14

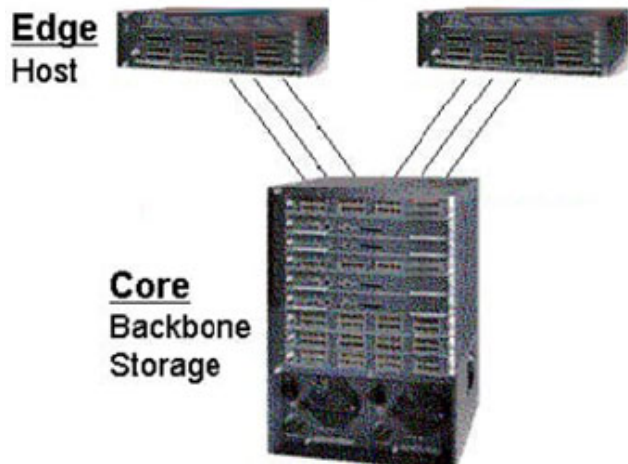
Power path has been successfully installed two weeks ago on a Solats 2.8 host. They are now reporting stack overflow messages. Name the two [2] events which can cause this problem.

- A. Installation of veritas Volume manager changed stack size to 0X400
- B. Customer manually reduced stack size in /etc/system file to 0X400
- C. Customer deleted stack size entry in power path custom file on the server
- D. Customer manually added too many 0x400 stack size entries to /etc/system

Answer: A,B

QUESTION 15

Exhibit:



State how many total ports are used for ISLs (not available for host or storage connections) in this core/edge example.

- A. 3
- B. 12
- C. 9
- D. 6

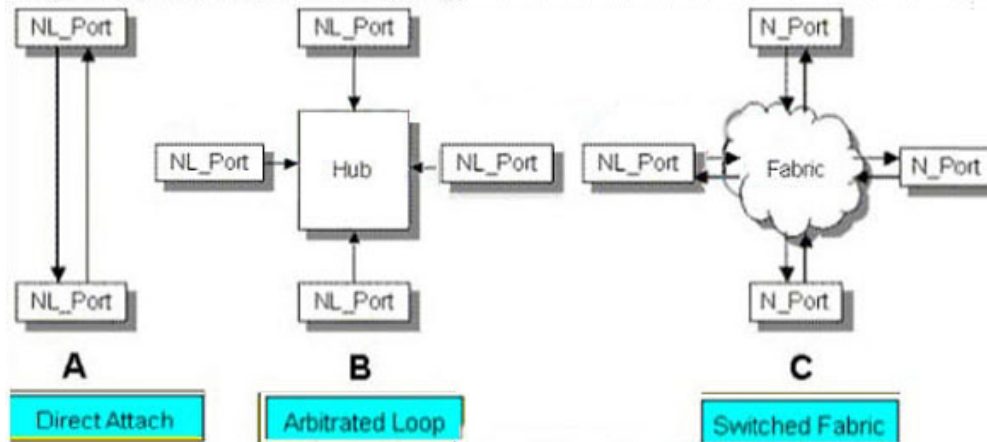
Answer: B

QUESTION 16

DRAG DROP

Try and match the product in Column 1 to the requirement in Column 2.

As an engineer at CertKiller.com you are required to match each diagram (A,B,C) to the switch topology



Topology labels to be moved

- Core-Edge
- Direct Attach
- Switched Fabric
- Arbitrated Loop

Answer:

Product	Requirement	
MDS-9509	Connect to storage	Product labels to be moved
MDS-PBF-16 (16 port blade)	Line card used for iSLS	
MDS-PBF-32 (32 port blade)	Low I/O large connectivity	
MDS-9509	Redundant Supervisor cards	

MDS-9509
MDS-PBF-16 (16 port blade)
MDS-PBF-32 (32 port blade)

QUESTION 17

DRAG DROP

Try and match the data type with its section in the HBA WWN.

IEEE HBA WWN

5	0	0	6	0	4	8	2	e	8	9	1	2	b	9	0
---	---	---	---	---	---	---	---	---	---	---	---	---	---	---	---

place here	place here	place here
12 bits	23 bits	24 bits

Data Type labels to be moved

LUN ID	Port ID	Reserved
Vendor Assigned	Manufacture Code	

Answer:

IEEE HBA WWN

5	0	0	6	0	4	8	2	e	8	9	1	2	b	9	0
---	---	---	---	---	---	---	---	---	---	---	---	---	---	---	---

Reserved	Manufacture Code	Vendor Assigned
12 bits	23 bits	24 bits

Data Type labels to be moved

LUN ID	Port ID	Reserved
Vendor Assigned	Manufacture Code	

QUESTION 18

Name the command which is used to notify PowerPath Volume Manager (PPVM) of a BCV device state change.

- A. symcfg rediscover
- B. symcfg discover
- C. powervdm discover
- D. powervadm rediscover

Answer: D

QUESTION 19

Name the two [2] components which are required to use SAN Manager.

- A. NAS Agent
- B. FCC Agent
- C. SDM Agent
- D. SAN Manager license

Answer: C,D

QUESTION 20

Explain the difference between the native long-wave Fabric Channel distance that EMC SUPPORTS VS. what Brocade supports.

- A. EMC: 35km, Brocade: 80 km
- B. EMC: 20km, Brocade: 10 km
- C. EMC: 35km, Brocade: 15 km
- D. EMC: 10km, Brocade: 35 km

Answer: A

QUESTION 21

On a Brocade DS 16-B2 (Brocade 3x00) series switch, how many buffer-to-buffer (BB) credits can be allocated to a port?

- A. 27
- B. 108
- C. 64
- D. 54

Answer: B

QUESTION 22

Explain the maximum number of active Zoneset(s) that a Mc Data fabric can have.

- A. 1
- B. 4
- C. 2
- D. 3

Answer: A

QUESTION 23

Explain when zoning changes are made in EMC VisualSAN 4.0 and saved on a DS-16B2 switch.

- A. When they are committed
- B. Immediately
- C. At next 30 minute information refresh
- D. When they are refreshed

Answer: A

QUESTION 24

Name the MDS 9000 auto-learn option.

- A. Port traffic loads
- B. Port zoning
- C. Port security configuration
- D. Port spanning differentiators

Answer: C

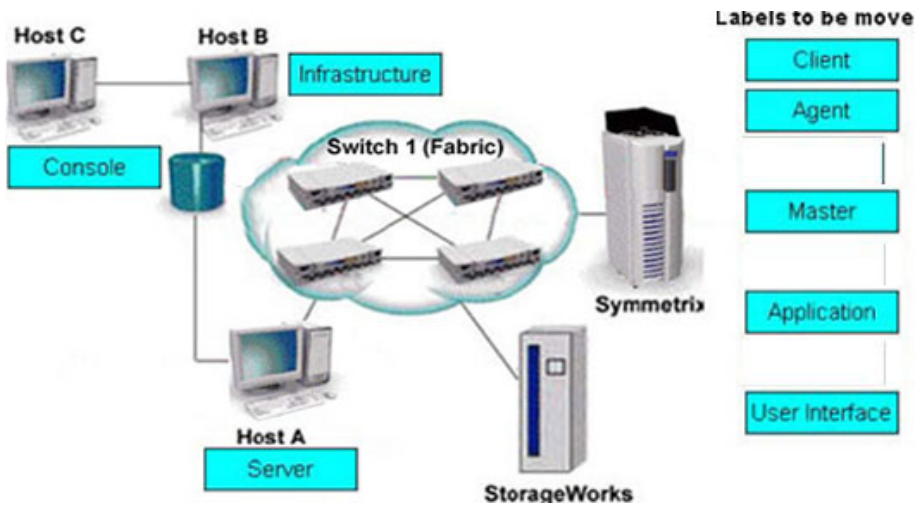
QUESTION 25

DRAG DROP

State what the three tiers are for a single server EMC Control center installation.



Answer:



QUESTION 26

Name the command which is used to display volumes in all Power path volume manager volume groups.

- A. powervadm show -vg
- B. powervadm list -vg
- C. powervadm show
- D. powervadm list

Answer: D

QUESTION 27

Explain what the RCT_L frame field setting indicates.

- A. The sequence number of the frame in an ordered set
- B. Whether a primitive function has been requested
- C. Whether the fame contains link control information or data
- D. The arbitrated frame size

Answer: C

QUESTION 28

Explain how many M-series Products on a single services processor can be supported by Connectrix manager.

- A. 48
- B. 64
- C. 32
- D. 16

Answer: A

QUESTION 29

State the two [2] PowerPath modes of operation.

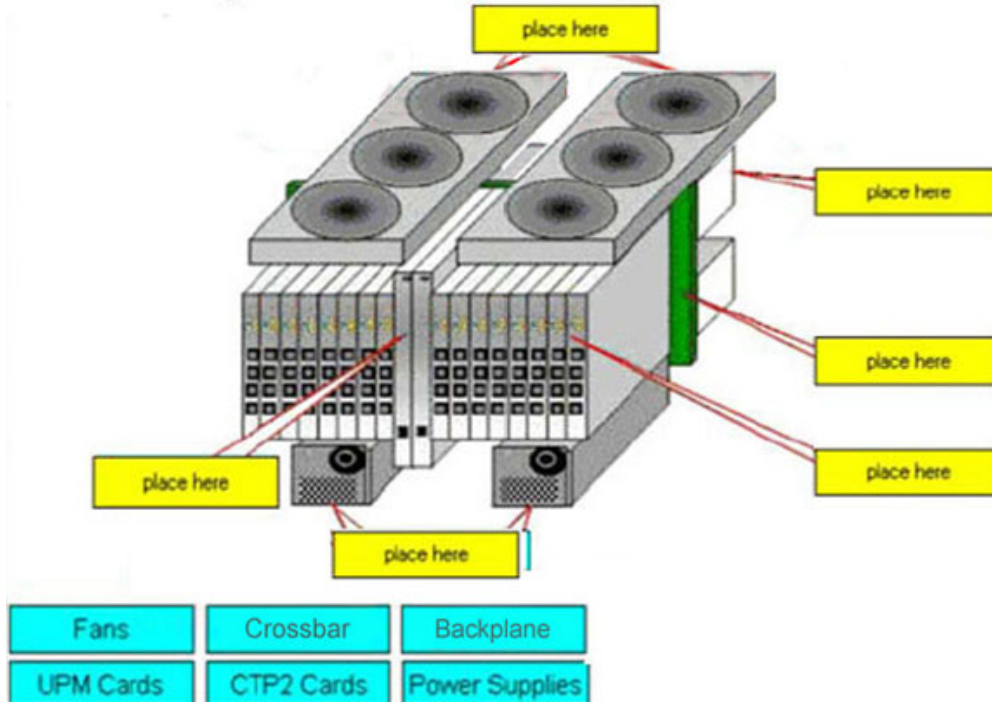
- A. standby
- B. active
- C. passive
- D. primary

Answer: A,B

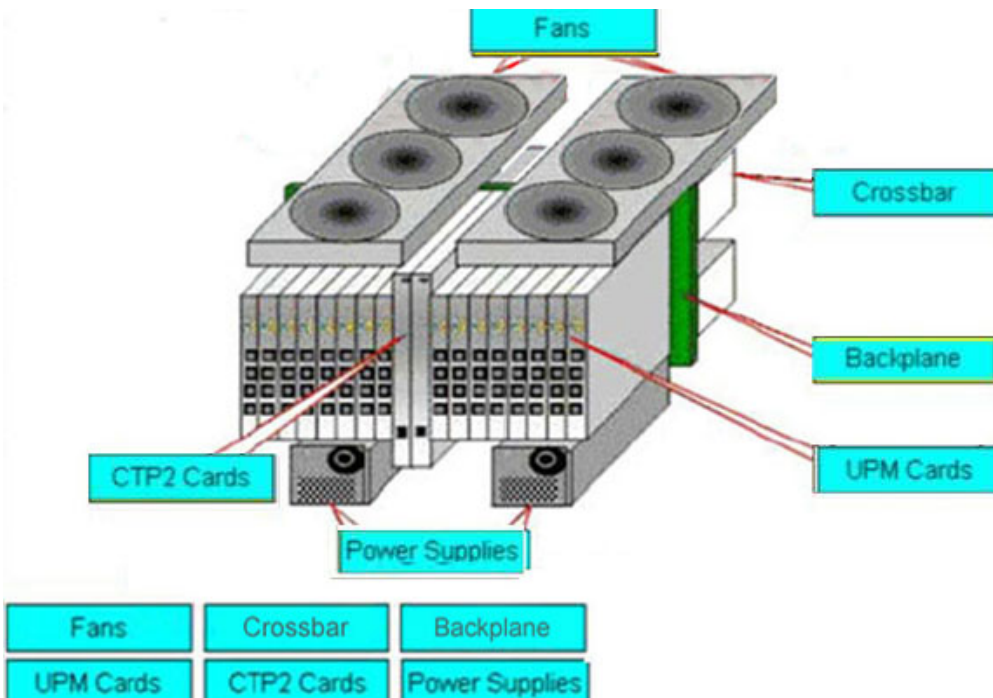
QUESTION 30

DRAG DROP

As an engineer at CertKiller.com you are required to match the components to this ED-64M



Answer:



QUESTION 31

State which MDS-9000 director/switch is capable of supporting the emerging 10 Gb bandwidth.

- A. 9509
- B. 9216
- C. 9140
- D. 9549

Answer: A

QUESTION 32

Explain how many ED-140M directors can be mounted in a single EC- 1200cabinet.

- A. 4
- B. 3
- C. 5
- D. 2

Answer: B

QUESTION 33

State two [2] advantages of IFCP vs FCIP.

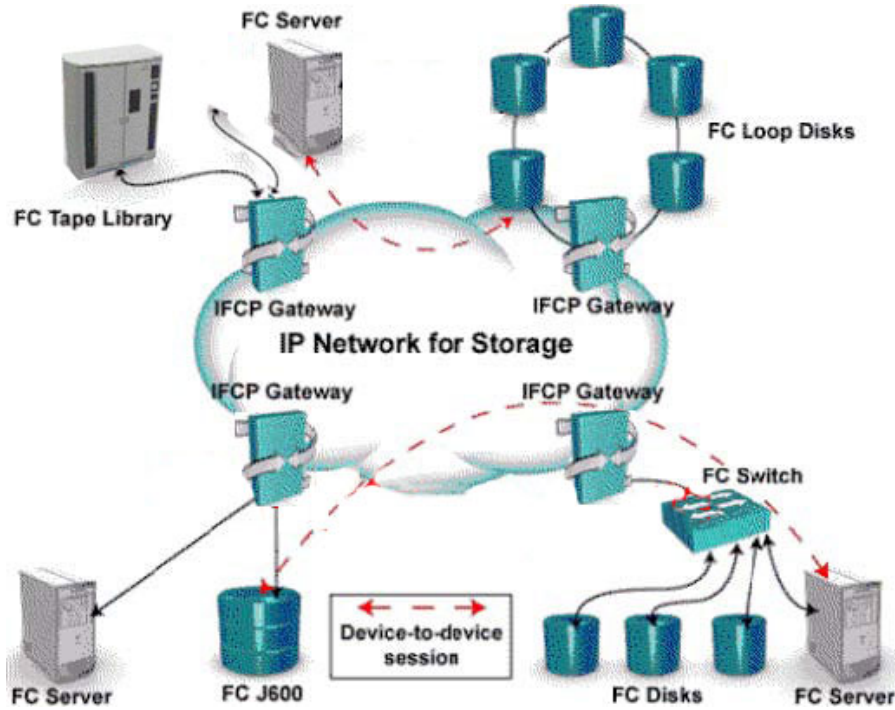
- A. Allow fabric to remain independent
- B. Maps IP addresses to individual Fibre Channel ports

- C. Creates end-to-end IP Tunneling Connecting SAN fabrics
- D. Extends the fibre channel SAN

Answer: A,B

QUESTION 34

Exhibit:



Gateways are used to connect existing Fiber Channel devices to an IP network, in this implementation, and as such will include physical interfaces. Which two [2] networks will you use.

- A. IP
- B. Fiber Channel
- C. Sonet
- D. ATM

Answer: A,B

QUESTION 35

DRAG DROP

E20-532

As an engineer at Certkiller.com you are required to match the protocol with its definition:

Protocol	Defintion
<i>Place here</i>	Establishing and managing IP-based devices
<i>Place here</i>	Tunneling IP Packets through a router to interconnect SAN islands
<i>Place here</i>	Interconnecting FC devices together in place of Fibre Switches
<i>Place here</i>	Connecting/extending Fibre Channel SANs

Protocols, select from these

FCIP	iFCP	iSCSI
------	------	-------

Answer:

As an engineer at CertKiller.com you are required to match the protocol with its definition:

Protocol	Defintion
iFCP	Establishing and managing IP-based devices
FCIP	Tunneling IP packets through a router to interconnect SAN islands
<i>Pending</i>	Interconnecting FC devices together in place of Fibre Switches
<i>Pending</i>	Connection/extending Fibre Channel SANs

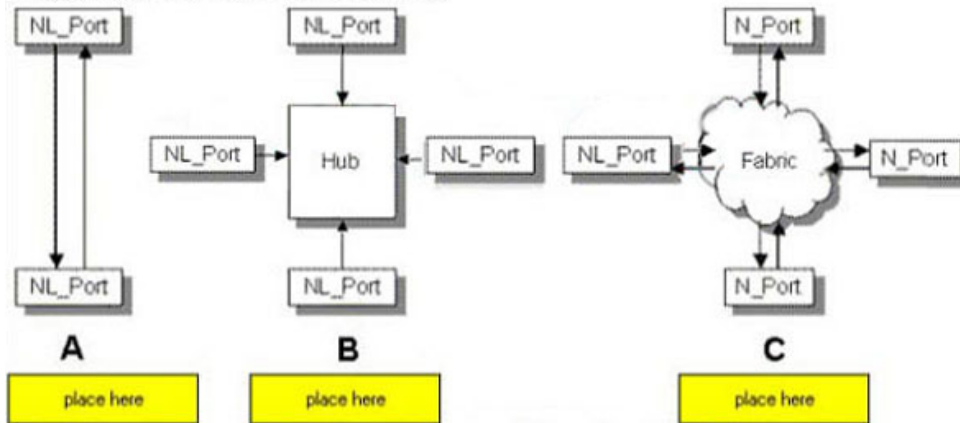
Protocols, select from these

FCIP	iFCP	iSCSI
------	------	-------

QUESTION 36
DRAG DROP

E20-532

As an engineer at CertKiller.com you are required to match each diagram (A,B,C) to the switch topology

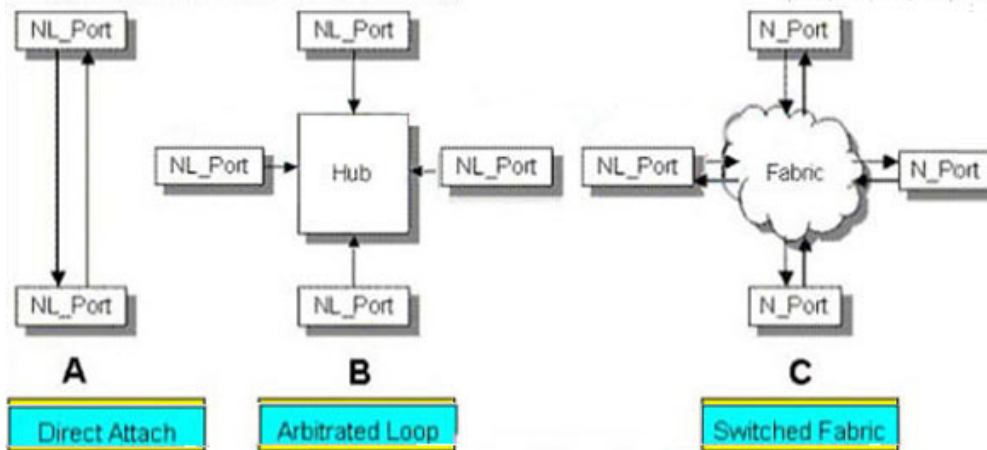


Topology labels to be moved

- Core-Edge
- Direct Attach
- Switched Fabric
- Arbitrated Loop

Answer:

As an engineer at CertKiller.com you are required to match each diagram (A,B,C) to the switch topology



Topology labels to be moved

- Core-Edge
- Direct Attach
- Switched Fabric
- Arbitrated Loop

QUESTION 37

Name the command which is used to determine if the Connectrix Service Processor can communicate to the FCC agent host.

- A. ping
- B. netstat
- C. tracert

D. ifconfig

Answer: A

QUESTION 38

State how many switching modules (line cards) can be inserted into the MDS-9509 Director.

- A. 7
- B. 8
- C. 5
- D. 6

Answer: A

QUESTION 39

Name the reserved address of the Fabric controller.

- A. FFFFFE
- B. FFFFFD
- C. FFFFFC
- D. FFFFFF

Answer: B

QUESTION 40

Explain what will be the cause of HBAs to be reported in the UNKNOWN pool in a Control Center environment.

- A. Master agent not running on the host that owns the HBA
- B. SDM agent not installed in the infrastructure
- C. SDM agent not running on the server that owns the HBA
- D. Host agent not running on the server that owns the HBA

Answer: D

QUESTION 41

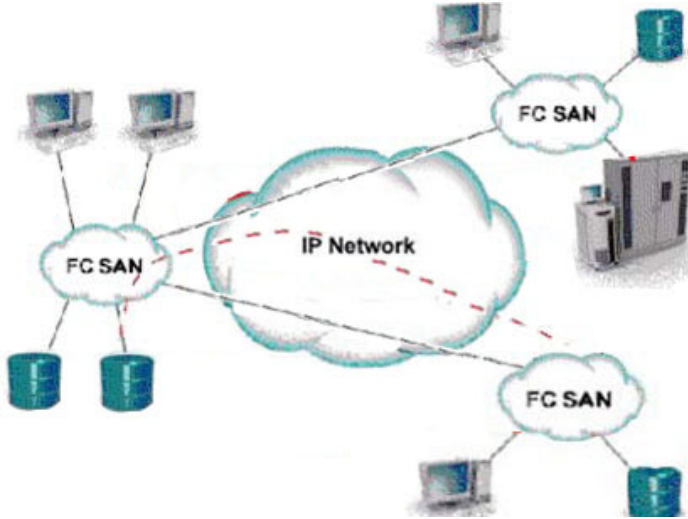
State where the LUN masking information is stored in the Symmetrix.

- A. DRV
- B. VCMDB
- C. GK
- D. SFS

Answer: B

QUESTION 42

Exhibit:



Explain what is represented by data flow in the picture.

- A. ISCSI representation of remote backup
- B. FCIP representation of remote backup
- C. ISCSI representation of remote DR
- D. FCIP representation of remote DR

Answer: D

QUESTION 43

Name the property which must be edited bestow full EMC Visual SAN 4.0 administrative privileges to a network user who does not possess network administrator privileges.

- A. ADMIN. PRIVILEGES
- B. TASKLIST. ADMIN
- C. ROLEGROUPS. ADMIN
- D. ROLEGROUPS. USER

Answer: C

QUESTION 44

Explain the difference between the native long-wave fibre channel distance that EMC support vs. what supports.

- A. EMC: 35 km, Cisco: 10km
- B. EMC: 10 km, Cisco: 35km
- C. EMC: 20 km, Cisco: 15km
- D. EMC: 15 km, Cisco: 15km

Answer: A

QUESTION 45

After adding new switches, Control center performance view statistics for switches displays gaps. Explain how can these gaps could be eliminated.

- A. Disable some parts on the new switches
- B. Increase the frequency of data collections
- C. Decrease the frequency of data collections
- D. Rediscover the fabric

Answer: C

QUESTION 46

SAN Manager is unable to perform a zoning operation, after a Connectrix Manager upgrade. Explain what needs to occur to enable zoning operations.

- A. Reinstall Fibre Zone bridge on the service processor
- B. Restore the Fiber Zone database from Backup
- C. Restore the FCC agent on the infrastructure host
- D. Refresh the copy of the VCMDB to the FA

Answer: A

QUESTION 47

Explain how it can be verified that the control center server is available on TCP port 5799.

- A. ping licalhost -p 5799
- B. srvmgr
- C. ping console type -m
- D. net stat -a

Answer: D

QUESTION 48

Name the two [2] items of information which will be displayed when viewing the Node List from Connectrix Manager.

- A. Portspeed
- B. Zone
- C. Fibre Channel address
- D. Port Number

Answer: C,D

QUESTION 49

Name the CLI command which is used for Device Masking.

- A. symcfg
- B. symmask
- C. fzone
- D. symconfig

Answer: B

QUESTION 50

State which SAN Manager folder inactive zones are maintained in.

- A. Planned Zones
- B. Active Zones
- C. Unused Zones
- D. Inactive Zones

Answer: A

QUESTION 51

State the recommended minimum amount of memory in a management station, for an EMC VisualSAN 4.0 installation in a mid-sized SAN.

- A. 256 MB
- B. 2 GB
- C. 1 GB
- D. 512 MB

Answer: C

QUESTION 52

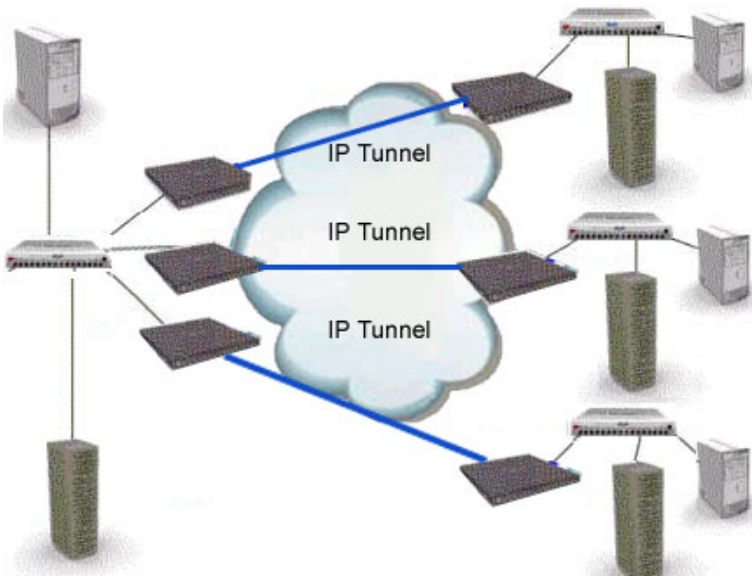
Within ControlCenter, Certkiller .com cannot discover their Brocade switches. Name the command which must be run on the switch to resolve this.

- A. snmpshow
- B. snmpmibcapset
- C. agtcfgset
- D. configure

Answer: B

QUESTION 53

Exhibit



What must be taken into account prior to merging the SANs, when scaling a FCIP extend network?

- A. Process for future firmware upgrades
- B. Inter-switch communication, domain and zone management, and VSANs
- C. The combined number of devices in the new FCIP extended SAN
- D. Traffic flows could be disrupted should a storage switch go down

Answer: B

QUESTION 54

In either a UNIX or Windows environment, name the command which is used for PowerPath monitoring and management.

- A. pp_select
- B. powermt
- C. powerdisplay
- D. powermon

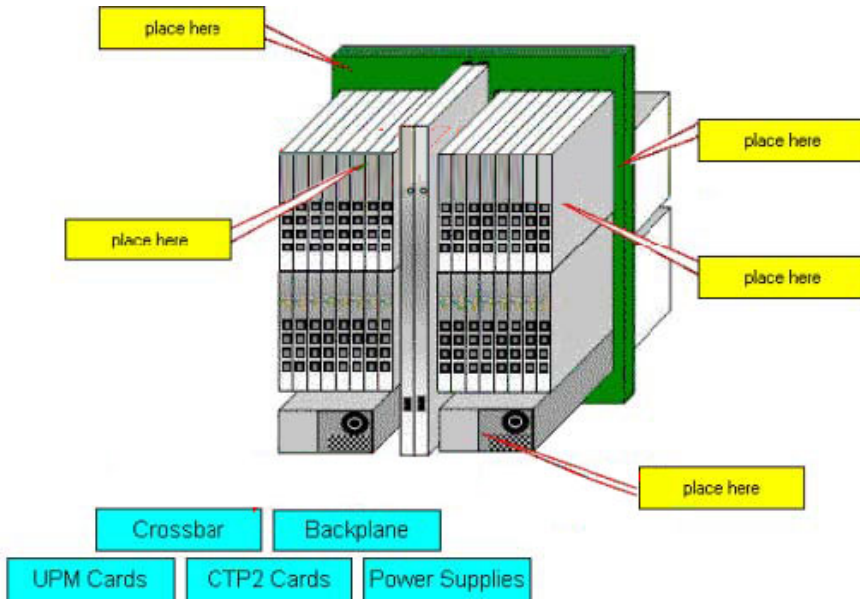
Answer: B

QUESTION 55

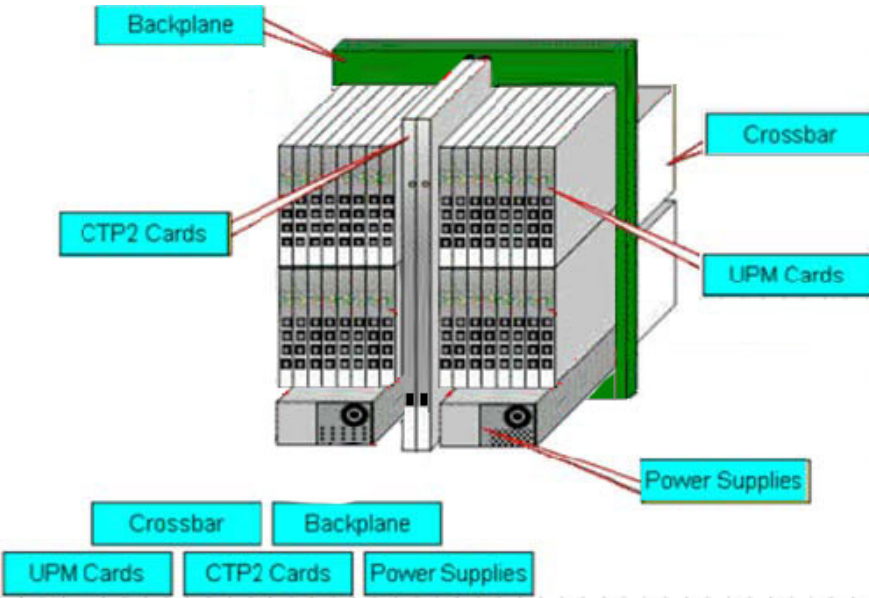
DRAG DROP

Try and match the components to this ED-140M

E20-532



Answer:



QUESTION 56

Name the two [2] UNIX utilities which are used to test network connectivity.

- A. nslookup
- B. traceroute
- C. ifconfig
- D. ping

Answer: B,D

QUESTION 57

Name the database service which needs to be verified if EMC Visual SAN 4.0 displays errors on program start.

- A. Oracle 8i
- B. Sybase 11
- C. Informix 9
- D. SQL Server 2000

Answer: D

QUESTION 58

Explain how many users can telnet into a Brocade B2 series switch at one time.

- A. 10
- B. 2
- C. 4
- D. 1

Answer: D

QUESTION 59

Name the two [2] statements which apply to the MDS IP Storage Services Module.

- A. Supports host I/O traffic to both CLARiiON AND Symmetrix
- B. Requires ISL to access storage ports
- C. Supports both CLARiiON and Symmetrix remote replication technologies
- D. Supports VSAN zoning

Answer: C,D

QUESTION 60

Which two [2] levels of user rights can be assigned to a Specific user, from within Connectrix Manager?

- A. Operator
- B. Fabric administrator
- C. Guest
- D. Maintenance

Answer: A,D

QUESTION 61

State how many buffer-to-buffer (BB) credits can be used per ASIC in a DS-32M2 switch.

- A. 30
- B. 32
- C. 60
- D. 64

Answer: C

QUESTION 62

DRAG DROP

Try and match the SAN management object to the location where it reside

Location	Object
(place here)	Zone
(Place here)	VCMDB
(place here)	LUN Mask
(place here)	Zoneset

- EDM
- Switch
- Celerra
- Symmetrix
- CLARiON

Answer:

Location	Object
Switch	Zone
Symmetrix	VCMBB
CLARiON	LUN Mask
Celerra	Zoneset

QUESTION 63

Name the M-series products which allow attaching arbitrated loop Devices.

- A. DS-24M2
- B. ED-32M2
- C. DS-16m2
- D. ED-140M

Answer: A

QUESTION 64

A new host has been plugged into Certkiller .com's SAN, but they cannot see the HBA WWNs appear in the Topology. Explain two [2] ways to resolve this.

- A. Rediscover the switch

- B. Reset the switch
- C. Enable SNMP on the switches
- D. Install the Host Agent and wait for host to be discovered

Answer: A,D

QUESTION 65

Name the two [2] features which apply to both the MDS-9120 and the MDS-9140 switches.

- A. Provides "host optimized" ports
- B. Supports SANtegrity Security Suite
- C. All ports are non-blocking
- D. Provides "bandwidth optimized" ports

Answer: A,D

QUESTION 66

Name the EMC visual SAN 4.0 component which provides LUN masking capabilities.

- A. SAN Assistant
- B. SAN Manager
- C. Configuration Manager
- D. Network manager

Answer: A

QUESTION 67

Name the two [2] topology port classes which are supported by all B-series products.

- A. B _ port
- B. E _ port
- C. FL _ port
- D. NL _ port

Answer: B,C

QUESTION 68

Certkiller .com has attached a FC-AL tape drive to a fibre channel switch, during FLOGI. Name the type of FC port which the switch will identify the drive.

- A. NL _ port
- B. GL _ port
- C. E _ port
- D. N _ port

Answer: A

QUESTION 69

Powermt, the PowerPath command, has reported a number of devices as being dead. Name the commands which are used to remove the dead devices.

- A. Powermt check; powermt restore; powermt config
- B. Powercmr rstore; powermt check; powermt config
- C. Powercf restore; powermt restore; powermt config
- D. Powercf check; powermt restore; powermt config

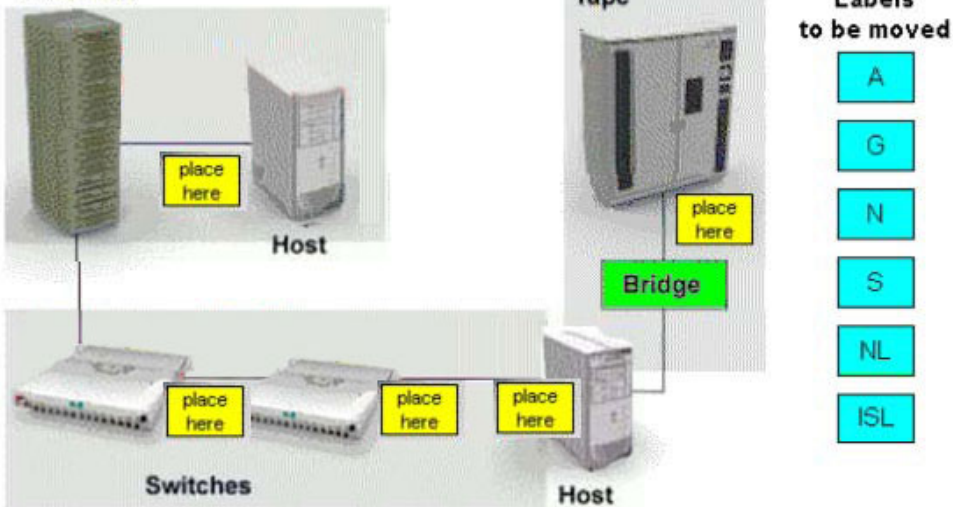
Answer: B

QUESTION 70

DRAG DROP

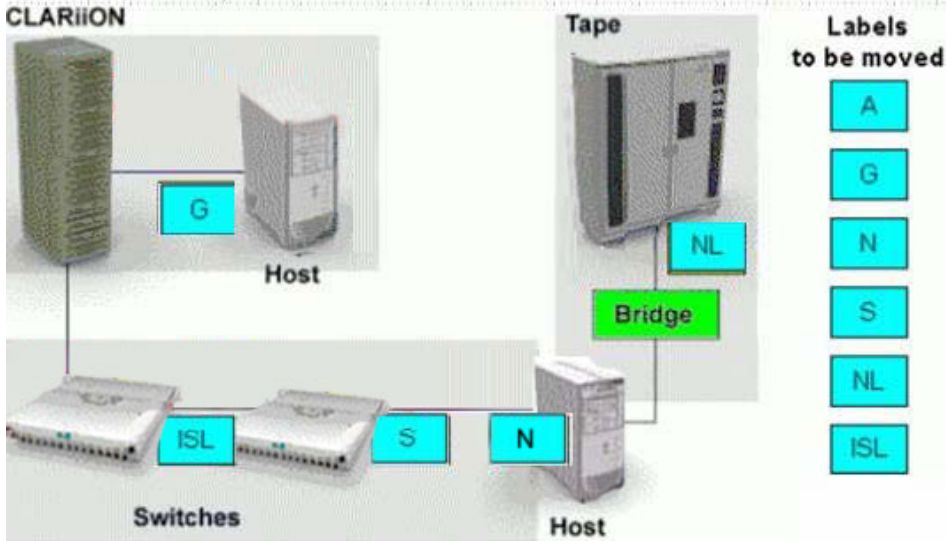
As an administrator at Certkiller.com you are required to match the SAN port type to the device (Labels might be used more than once or not at all).

CLARIION



Answer:

As an administrator at Certkiller.com you are required to match the SAN port type to the device (Labels might be used more than once or not at all).



QUESTION 71

Name the command which is used to view the login history table on the Symmetrix.

- A. symmask list hba -v
- B. symmask list logins
- C. symmask list database
- D. symmask list vcmdb

Answer: B

QUESTION 72

Explain what would describe the non-blocking architecture deployed in M-series switches.

- A. Memory based operations which fence partitions of memory into bit-buckets for data delivery
- B. Allows frames to be sent to destination ports based on the receiving ports availability
- C. Allows memory segmentation across the s/bar platform permitting data re-direction based on ASIC availability
- D. Switch operations which move data across the bus into CMM and finally to MPC for delivery

Answer: B

QUESTION 73

In a McDATA ENVIRONMENT, name the software which allows for I/O threshold alerts to be configured.

- A. ENS GUI
- B. FibreZone Bridge
- C. Connectrix Manager
- D. OnAlert

Answer: C

QUESTION 74

You will find this Fibre Channel address of a node, in a Log-file Connectrix Manager - 6B1613.

Name the port to which this node will be connected.

- A. 11
- B. 13
- C. 16
- D. 12

Answer: D

QUESTION 75

State the three (3) valid types of persistent bindings.

- A. WWPN
- B. WWNN
- C. S_ID
- D. D_ID

Answer: A,B,D

QUESTION 76

State what the two [2] views in Device Manager are.

- A. Summary view
- B. Disk view
- C. Device view
- D. Fabric view

Answer: A,C

QUESTION 77

Which command is used to display status and configure power path, in either a UNIX or windows environment?

- A. power path_ cli
- B. powercf

- C. powermt
- D. powermon

Answer: C

QUESTION 78

In the OSI 7-layer Network Model, name the layer which describes the cabling used to create Fiber Channel SANs.

- A. Layer 2, Data Link
- B. Layer 1, Physical
- C. Layer 6, Presentation
- D. Layer 3, Network

Answer: B

QUESTION 79

Explain what is required to implement windows based servers in an ISCSI SAN.

- A. Install an FC HBA into server and connected to the SAN
- B. Install an FC HBA and Microsoft certified ISCSI driver
- C. Install Microsoft certified ISCSI driver to utilize an existing FC SAN
- D. Install Microsoft certified ISCSI drive to utilize an existing NIC

Answer: D

QUESTION 80

Which two [2] levels of user rights can be assigned to specific users, from Connectrix Manager?

- A. Product Administrator
- B. Configuration Administrator
- C. System Administrator
- D. Fabric Administrator

Answer: A,C

QUESTION 81

Name the two [2] tools which are used to modify a domain ID on a BROCADE series switch.

- A. fabric OS CLI
- B. control center
- C. configupload
- D. web tools

Answer: A,D

QUESTION 82

Explain what step must be performed to introduce new switches into a Control center infrasture.

- A. Manage
- B. Add
- C. Discover
- D. import

Answer: C

QUESTION 83

Name the EMC VisualSAN 4.0 component which provides switch zoning capabilities.

- A. SAN Assistant
- B. Configuration Manager
- C. Zone Manager
- D. Network Manager

Answer: D

QUESTION 84

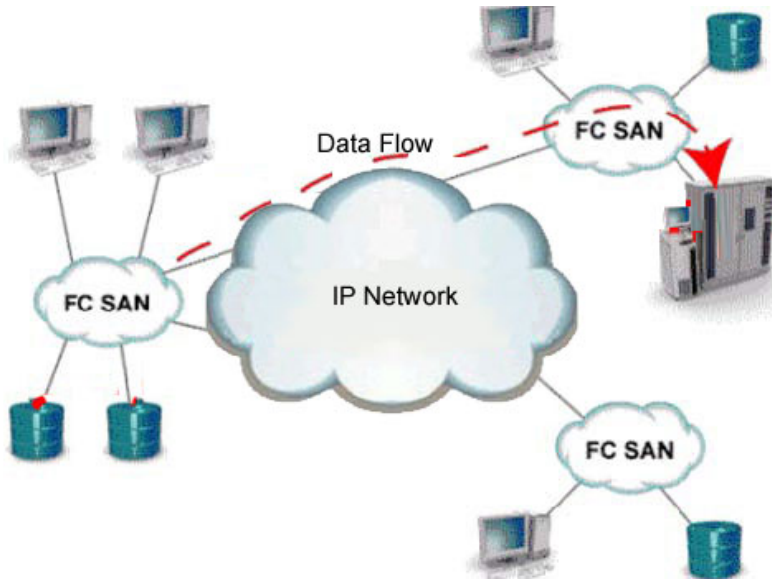
Name the Fiber channel address which is reserved for the Directory server.

- A. FFFFFC
- B. FFFFFB
- C. FFFFFE
- D. FFFFFD

Answer: A

QUESTION 85

Exhibit



Explain what is represented by the data flow in the picture.

- A. IFCP representation of remote backup
- B. ISCSI representation of remote DR
- C. IFCP representation of remote DR
- D. ISCSI representation of remote backup

Answer: A

QUESTION 86

Name the zoning changes which are made to an inactive zone set with native DS-16B2 switch tools reflected in EMC Visual San 4.0.

- A. At the next 30 minutes information refresh
- B. When they are committed
- C. Immediately
- D. When they are refreshed

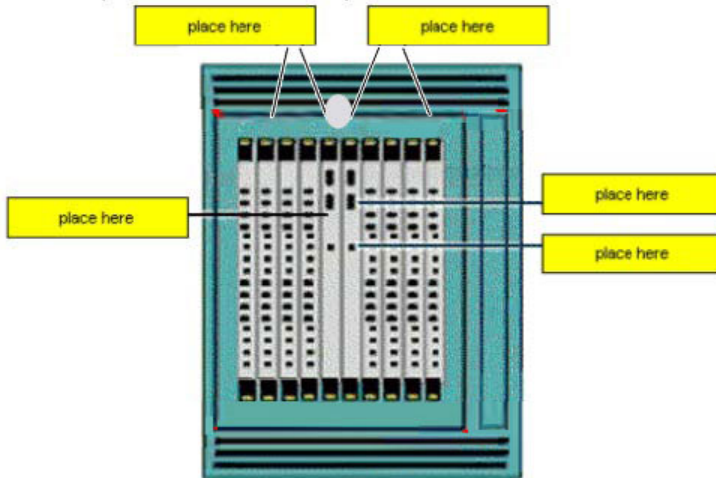
Answer: A

QUESTION 87

DRAG DROP

E20-532

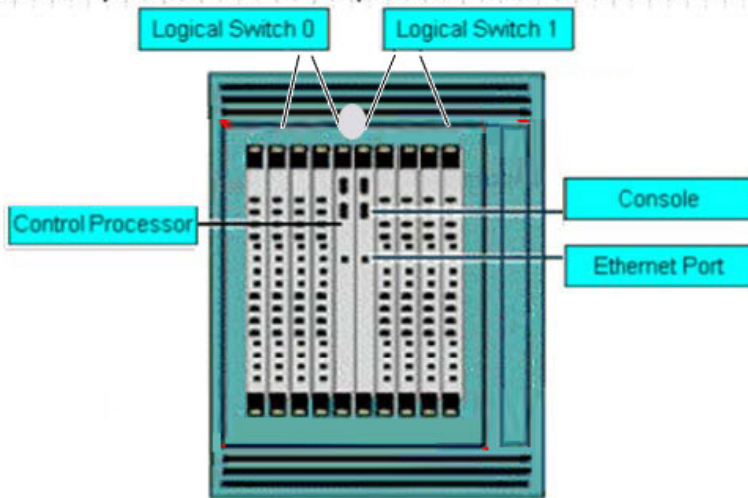
As an engineer at certkiller .com you are required to match the parts shown on the picture of the ED-12000b.



- Console
- Ethernet Port
- Control Processor
- Logical Switch 0
- Logical Switch 1
- Logical Switch 2

Answer:

As an engineer at certkiller .com you are required to match the parts shown on the picture of the ED-12000b.



- Console
- Ethernet Port
- Control Processor
- Logical Switch 0
- Logical Switch 1
- Logical Switch 2

QUESTION 88

Name the statement about the MDS 9000 32-port switch module which is correct.

- A. Has a non-blocking architecture
- B. Shared 2 GB bandwidth among four ports
- C. Has more bandwidth than the 16 port module
- D. Can support 16 ISLs

Answer: B

QUESTION 89

Name the version of HBA firmware which must be used with PowerPath.

- A. Current approved EMC HBA firmware
- B. Latest HBA Firmware from vendor
- C. Firmware shipped with HBA
- D. Current HBA firmware

Answer: A

QUESTION 90

Name the Brocade CLI command which prints entries of the nameserver.

- A. showNS
- B. nsDisp
- C. showNameServer
- D. nsShow

Answer: D

QUESTION 91

When doing fabric zoning, which is an EMC recommended best practice?

- A. Single FA zoning
- B. Multiple HBA zoning
- C. Single HBA zoning
- D. Multiple FA zoning

Answer: C

QUESTION 92

State how many bits a WWN contains.

- A. 24
- B. 16
- C. 32
- D. 64

Answer: D

QUESTION 93

Name the native command on a B-series switch which will provide data for EMC Customer Service.

- A. switchsupport
- B. showtech
- C. supportshow
- D. supportlogs

Answer: C

QUESTION 94

Explain the recommended minimum amount of free disk space in a management station for an EMC Visual SAN 4.0 installation in a large San.

- A. 3GB
- B. 1 GB
- C. 9GB
- D. 6GB

Answer: D

QUESTION 95

State how many ports can be in one trunking group on a B2-series (Brocade 3x00 series) switch or director.

- A. 8
- B. 4
- C. 1
- D. 2

Answer: B

QUESTION 96

Name the command which is used to backup the configuration of a Brocade switch.

- A. backupconfig
- B. fireware Download
- C. configDownload
- D. configupload

Answer: D

QUESTION 97

Explain how many bits are in a fibre channel address.

- A. 32
- B. 16
- C. 64

D. 24

Answer: D

QUESTION 98

Certkiller .com is connecting a SAN gateway to a Fiber Channel switch. The WWN of port 8 on the gateway is:

10:00:00:60:45:16:0A:0D

Name the WWPN which would appear on the switch for this port.

- A. 20:08:00:60:45:16:0A:0D
- B. 20:00:08:60:45:16:0A:0D
- C. 10:00:08:60:45:16:0A:0D
- D. 10:08:00:60:45:16:0A:0D

Answer: A

QUESTION 99

Attached to a CLARiiON, a host running power path is migrated to a new switch connected to the same CLARiiON. Name two [2] actions required to complete the migration.

- A. Set the access control mode from the storage system properties menu
- B. Set the initiator failover mode
- C. Add the new luns to the hosts existing RAID group
- D. Set the SP mixed mode from the storage system properties menu

Answer: B,C

QUESTION 100

In a single EC-1200 cabinet, how many DS-32M2 switches can be mounted?

- A. 16
- B. 10
- C. 12
- D. 14

Answer: C

QUESTION 101

Name the two [2] MDS models which would you recommend to allow future growth.

- A. MDS-9216
- B. MDS-9120
- C. MDS-9140
- D. MDS-9509

Answer: A,D

QUESTION 102

Name the two [2] management tools which have SAN zoning capabilities in a McDATA environment.

- A. Storage virtualization Control
- B. Fabric Control Watch
- C. Connectrix Manager
- D. Embedded Web Server

Answer: C,D

QUESTION 103

Explain what S_ID Lockdown is used for.

- A. Secure access to a device by a combination of the host's WWN and its S_ID
- B. Secure access to a device using a zone set and S_ID combination on a switch
- C. Perform persistent binding to a device on a host using its S_ID
- D. Secure a device using the port number and S_ID

Answer: A

QUESTION 104

Explain where the available zones are stored when using Connectrix Manager to add a zone to an existing fabric.

- A. Hardware Fabric List
- B. Zone Library
- C. Active Switch Memory
- D. Zones in ZoneSet

Answer: B

QUESTION 105

DRAG DROP

Try and match the units to their definitions

E20-532

Term	Definition
(place here)	The number of ISLs a frame travels enroute to its destination
(place here)	Qualified maximum number of initiators that can access a single storage port through a SAN
(place here)	Number of nodes or ports that can contend for the bandwidth of an ISL
(place here)	Qualified maximum number of storage ports that can be accessed by a single initiator through a SAN
(place here)	The number of hops a frame travels enroute to a destination

- Hop
- Fan-in Ratio
- Fan-Out Ratio
- Oversubscription Ratio

Answer:

Term	Definition
Hop	The number of ISLs a frame travels enroute to its destination
Fan-Out Ratio	Qualified maximum number of initiators that can access a single storage port through a SAN
Oversubscription Ratio	Number of nodes or ports that can contend for the bandwidth of an ISL
Fan-in Ratio	Qualified maximum number of storage ports that can be Accessed by a single initiator through a SAN
(place here)	The number of hops a frame travels enroute to a destination

QUESTION 106

To a Sun Solaris host, a new HBA has been added. The new HBA is logged into the FA port on the Symmetrix, after a reconfiguration reboot, but it cannot see any devices. Name the two [2] which must be verified.

- A. LUN number conversion from decimal to hexadecimal in the sd.conf file
- B. Correct HBA WWN and FA association exists in the VCMDB
- C. LUN number conversion from hexadecimal to decimal in HBA driver configuration file on the host.
- D. LUN number conversion from hexadecimal to decimal in the sd.conf file

Answer: B,D

QUESTION 107

Name the settings which are used for connecting a PC serial port to the M-Sereies products.

E20-532

- A. 57600 bits per second, 8 Data bits, Even parity, 2 Stop bit, Xon/Xoff Flow Control.
- B. 57600 bits per second, 7 Data bits, None for parity, 1 Stop bit, None for Flow Control.
- C. 57600 bits per second, 8 Data bits, None for parity, 1 Stop bit, None for Flow Control.
- D. 57600 bits per second, 7 Data bits, None for parity, 2 Stop bit, Hardware Flow Control.

Answer: C

QUESTION 108

DRAG DROP

As an engineer at certkiller .com you are required to match the Performance Historical Graph option with an analysis function.

Option	Defintion
Place here	Calculate the probability that a particular rate will be realized
Place here	Analyze the Statistical mean and standard deviation data for each device.
Place here	Calculate a projected saturation date for a selected fabric, switch, or port according to the device's network traffic trends

Options, Select from these

Linear Regression	Gaussian Distribution	Poisson Distribution
-------------------	-----------------------	----------------------

Answer:

As an engineer at Certkiller .com you are required to match the Performance Historical Graph option with an analysis function.

Option	Defintion
Poisson Distribution	Calculate the probability that a particular rate will be realized
Gaussian Distribution	Analyze the statistical mean and standard deviation data for each device.
Linear Regression	Calculate a projected saturation date for a selected fabric, switch, or port according to the device's network traffic trends

Options, select from these

QUESTION 109

Name the command which is used in SAN Manager to activate zoning changes made in the repository.

- A. Load
- B. Refresh
- C. Import
- D. Enable

Answer: B

QUESTION 110

Exhibit

Exhibit: image031.gif

Name the two [2] agents which are a requirement in a Control center environment to enable zoning capabilities.

- A. hot
- B. SDM
- C. Master
- D. FCC

Answer: C,D